



PRESENTATION BROCHURE

SAMURAI ONE





About the SAMURAI ONE

It was designed by the ship design company *Insenaval*, based in Vigo, Spain and was built by the shipyard *Astondoa* and propelled by *MCÍes* both also, Spanish companies.



This magnificent yacht has a total length of 43.58 metres and a beam of 8.60 metres.

The yacht is equipped to get a range of about 4,000 nautical miles, which is provided by its 75,000 litre fuel tank.

Technical characteristics



PLATE NUMBER
TE-1-9 2013



YEAR
2007



LENGTH
43.58 metres



BEAM
8.60 metres



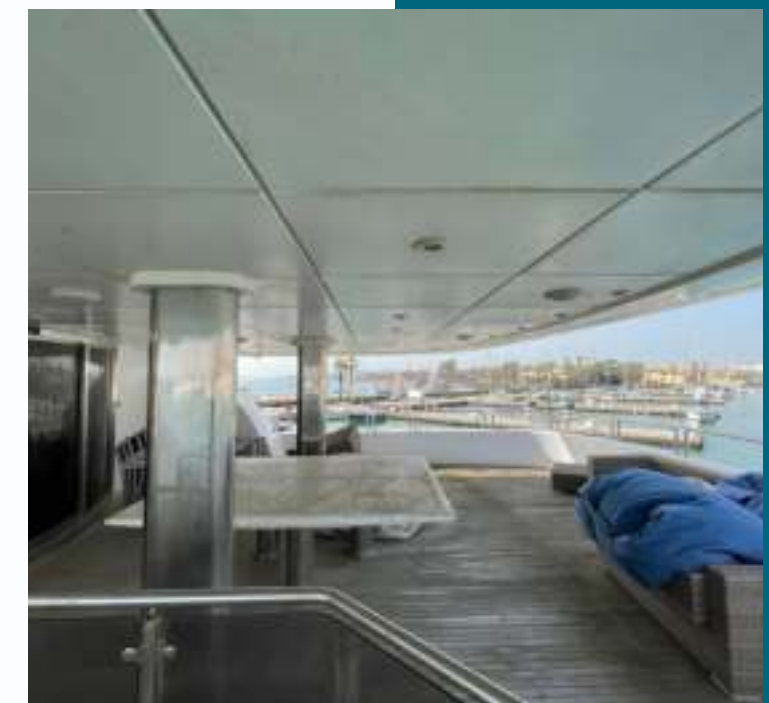
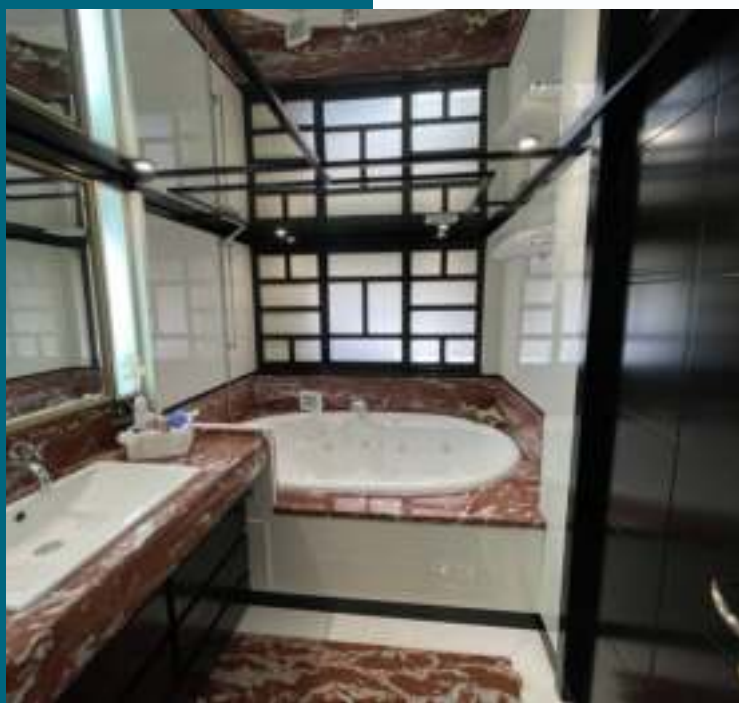
MOTOR
2 diesel engines,
each 1520 kW

The Samurai One

The Samurai One is a floating mansion with 6 VIP cabins, 3 terraces, an outdoor jacuzzi and also indoor jacuzzis, air conditioning, gym, nine bathrooms and a spacious dining room.

The accommodation boat capacity is prepared for 12 guests in 6 cabins, plus an extra for the crew of 4 people.

The whole usability area covers up to 1,200 square meters and its hull is made of steel, with an aluminum superstructure.



More Pictures



SAMURAI ONE | IAG Auction

Auction's Terms and Conditions

📌 In order to participate in this auction the bidder must deposit **49.875 €** to the following bank account shown below:

International Auction Group S.L.U. - Banco Sabadell: ES31 0081 0397 3900 0119 9827 - BIC: BSABESBBXXX

📌 Send end an email to **josemaria.mendez@iagauktion.com** , with the subject "**Samurai One's Auction**" and with your personal details, ID card number and transfer payment receipt.

📌 In case of you are not the final successful bidder, the deposit will be returned at the end of the auction in an estimated time of 4 to 7 days.



For further information, contact to

JOSÉ MARÍA MÉNDEZ CASTRO

Project Management Director

josemaria.mendez@iagauktion.com

(+34) 657 297 811

www.iagauktion.com
